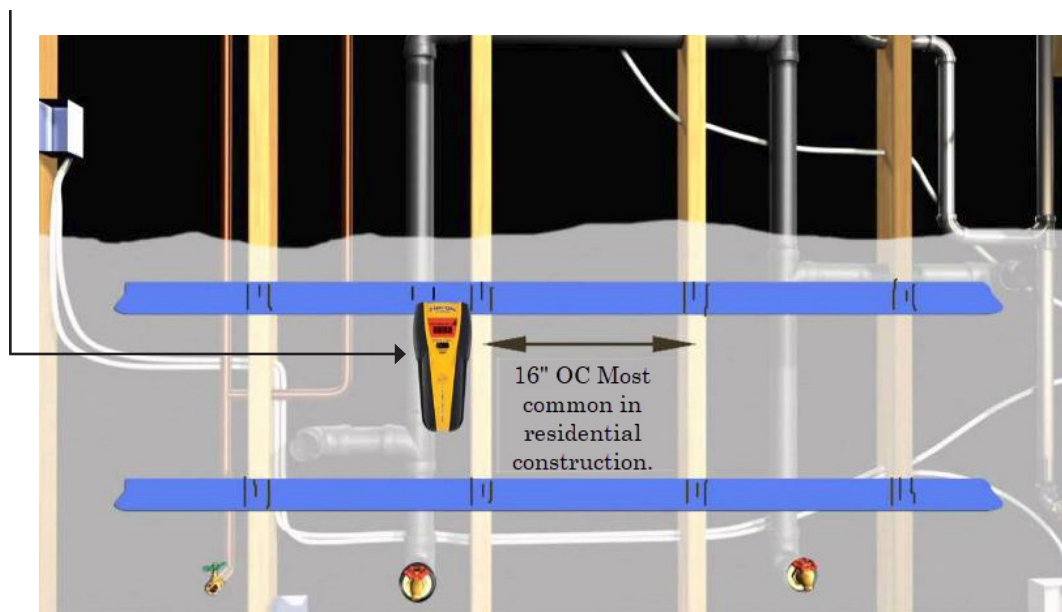


Locating Studs for Hanging Corbels and Brackets

Option 1: Tap with a knuckle or hammer lightly around the wall, when the sound changes from hollow to a solid thud you've hit a stud. Use a small nail to confirm.

Option 2: Use Stud Finder. The stud finder locates metal that reacts to magnets, you are essentially looking for screws and nails.

Move the stud finder left and right, up and down then diagonally while watching for the red light. When it goes off, you've found a stud. Make a mark, find your level, then drive screw in leaving $\frac{1}{4}$ " out to hang off of.



↑ Option 3

Option 3: Outlets are mounted on studs, once you find one they are supposed to be 16" on center from each other.

Note: The same holds true for wall vents, windows and door jambs. Measure 16" one way or the other, you're supposed to be able to hit a stud.

We would love to add your work to our gallery and social media. To be featured, email photos to rjacobs@brownwoodinc.com.

Designs of Distinction® by Brown Wood, Inc.
7040 Lawndale Ave. Lincolnwood, IL 60712
800.328.5858
www.brownwoodinc.com

Follow us and share your photos!
@dodbybrownwood

