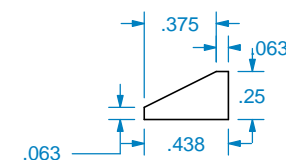
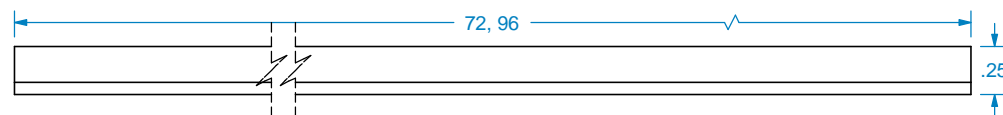
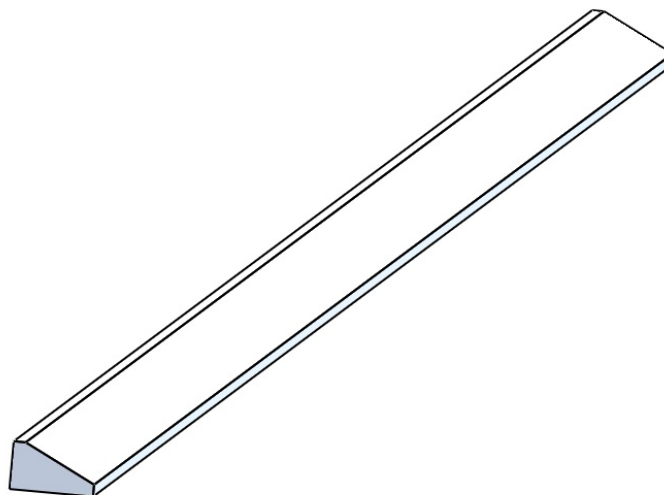


NAME	PART NUMBER	SIZE
ANGLED DECORATIVE BAR	01200250-1-72	.438 X .25 X 72
ANGLED DECORATIVE BAR	01200250-1-96	.438 X .25 X 96



REVISION HISTORY			TOLERANCES		MATERIALS AND FINISHES	TITLE: ANGLED DECORATIVE BAR	
REV	REV DATE	DESCRIPTION	WIDTH	± .03125"		NOMINAL SIZE SEE TABLE FOR SIZES	
			THICKNESS	± .03125"	PLEASE VISIT OUR WEBSITE FOR A COMPLETE LIST. www.brownwoodinc.com 1-800-328-5858 NOTES: Do not scale. Use dimensions only. All dimensions are in inches unless noted	DWG #:	REV:
			LENGTH	± .0625"			
			ANGULAR	± x.x°			
			PROFILE	± x.xxx"			
			Use General Tolerances Unless Noted			DATE: 8/20/2024	SCALE: 1:1